



***ECOHIPL***

***PILIHAN BERKUALITAS & EKONOMIS***



# WOODGRAIN



**ECO-P061** Frost Teak



**ECO-P043** Niseko Oak



**ECO-P055** Avoli oak



**ECO-007** Laurel Oak



**ECO-P093** European Pear



**ECO-009** Turkey Oak



**ECO-006** Swiss Sycamore



**ECO-089** Snow Walnut



**ECO-P065** Milk Sedal



**ECO-002** White Larch



**ECO-P048** Snow Katsura



**ECO-P092** Straight Rhumba



**ECO-P063** Sugar Maple



**ECO-P058** Fraser Fir



**ECO-P046** Sienna Katsura



**ECO-P062** Quilt Maple



**ECO-001** Snow Maple



**ECO-072** Ash Cocoa



**ECO-010** Canyon Oak



**ECO-P066** Tea Sedal



**ECO-090** Harmony Teak



**ECO-P060** Toast Teak



**ECO-014** Cocoa Deluxe



**ECO-P056** Caen Oak



**ECO-P045** Yezo Elm



**ECO-P042** Hokkaido Oak



**ECO-P050** Dove Walnut



**ECO-P047** Raven Katsura



**ECO-017** Coffee Deluxe



**ECO-011** Brown Beech



**ECO-P051** Gold Sycamore



**ECO-022** Picollo



**ECO-016** Straight Teak



**ECO-020** Stella Cherry



**ECO-021** Colombia Cherry



**ECO-077** Light Zebra



**ECO-033** Palmtree



**ECO-P095** Espresso Nova



**ECO-032** Afrikan Wenge



**ECO-024** African Sapele



**ECO-P064** Red Moka



**ECO-030** Red Rosewood



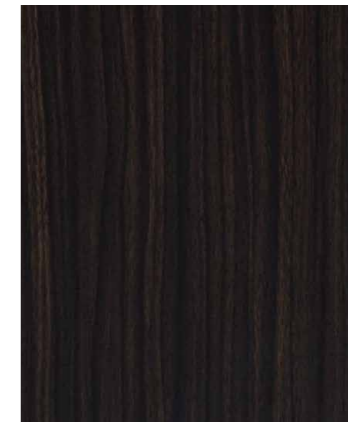
**ECO-P071** Red Teak



**ECO-P084** Mocca Firwood



**ECO-019** Ashed Oak



**ECO-035** Hazy Elm



**ECO-034** Cozina



**ECO-P059** Balsam Fir



**ECO-026** Topaz Walnut



**ECO-031** Sepia Walnut



**ECO-029** Malay Oak



**ECO-086** Gray Finelines



**ECO-P067** Coffee Sedal



**ECO-018** Liverpool Wood



**ECO-036** Golden Palm



**ECO-P087** Country Oak



**ECO-P049** Amber Walnut



**ECO-023** Choco Walnut



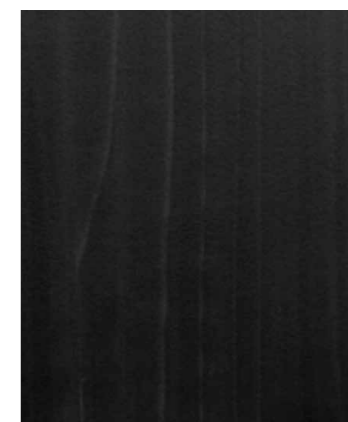
**ECO-027** Russet Teak



**ECO-078** Ash Picollo



**ECO-079** Quarterline Ash



**ECO-P054** Milano Pear

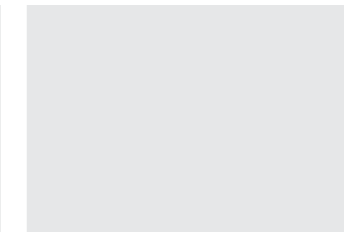




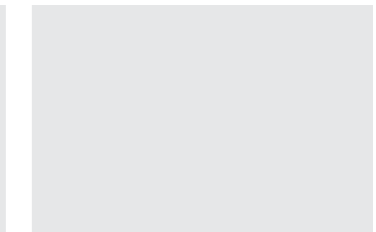
**SOLID**



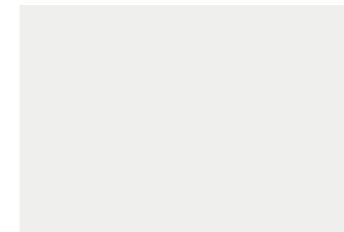
**ECO-W001** White Glossy



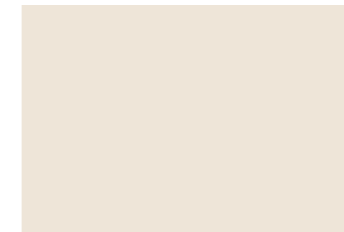
**ECO-W002** White Texture



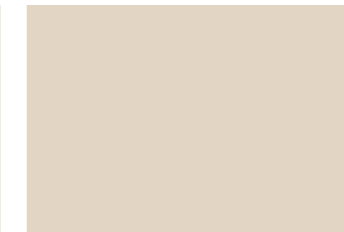
**ECO-W016** White Matt



**ECO-SLD003** Ice White



**ECO-SLD004** Eggshell



**ECO-SLD007** Sand



**ECO-SLD005** Beige



**ECO-SLD008** Light Grey



**ECO-SLD008G** Light Grey Gloss



**ECO-SLD008M** Light Grey Matt



**ECO-SLD009** Grey



**ECO-SLD010** Dark Grey



**ECO-SLD011** Black



**ECO-SLD011G** Black Gloss



**ECO-SLD011M** Black matt



**ECO-SLD016** Sea Blue



**ECO-SLD018** Leaf Green



**ECO-SLD021** Sunflower



**ECO-SLD024** Tangerine



**ECO-SLD025** Red

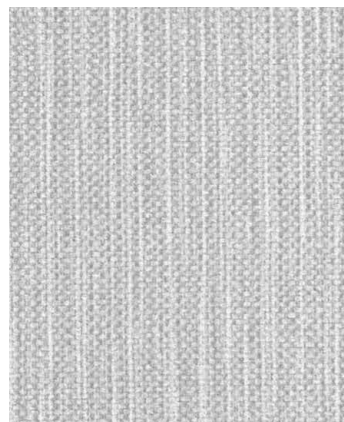


**ECO-SLD025G** Red Gloss



**ECO-SLD028** Pink

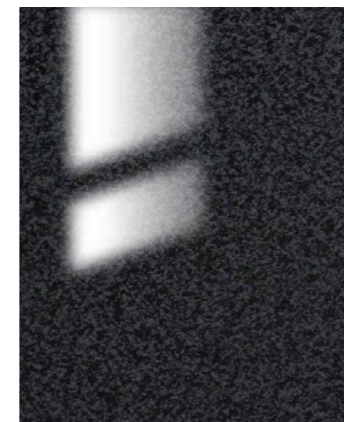
**PATTERN**



**ECO-P097** Salt Tris



**ECO-P098** Creme Tris



**ECO-038G** Noir Marble Glossy



**ECO-2000** Silver Hairline



**ECO-080** Steel Charm

# MAINTENANCE MANUAL

## ▲ Harsh Chemicals

Any spill of harsh chemicals and acid-based cleaner should be removed immediately, rinsed and wiped dry.

## ▲ Hot Object

Exposure to hot object may damage the HPL. Use protective insulation pad between the hot surface and HPL.

## ▲ Sharp Object

Avoid using knives or other sharp objects directly on the laminate surface.

## ▲ Impact

Impact from dropping heavy objects on the HPL may cause dents, cracks, and chipping.

## Cleaning Light Stain

Use a damp cloth or sponge with clean water.

## Cleaning More Difficult Stain

Such as coffee or tea, use melamine sponge and dish soap or mild detergent.

## Cleaning Stubborn Stain

Use a little of baking soda and water and scrub lightly using a soft bristled brush.



**Water  
Resistant**



**High  
Durability**



**Easy  
Application**



**Easy  
Maintenance**

## TECHNICAL DATA

PROPERTY	UNIT	REQUIREMENT	RESULT
Thickness	mm	± 0.10	Pass
Dimension	mm	± 10	Pass
Resistance to Dry Heat	Appearance Rating	Min 2	Pass
Resistance to Surface Wear	Revs	≥ 350 (400)	Pass
Immersion in Boiling Water	%	Max 19	Pass
Resistance to Staining	Appearance Rating	Min 2	Pass
Tensile Strength			
a. Landscape	MPa	Min 45	Pass
b. Potrait	MPa	Min 45	Pass
Resistance to Cigarette Burns (120s)	Appearance Rating	Slight change, no effect	Pass
Surface 180°C ± 1°C radiant	Appearance Rating	≥ 600 no effect	Pass
Impact Resistance	Appearance Rating	No split	Pass

- ECO HPL are 1220mm x 2440mm x 0.7mm unless otherwise stated.
- ECO HPL are recommended for interior use only.
- All specifications are subject to change without prior notice.
- The samples shown are only indicative of the color shade and textures.
- Customers are advised to reconfirm the color at the time of ordering.
- Please inspect all products purchased before installation.

### CUSTOMER SERVICE

 021-3971-8600

 0811-905-6868